

The information on the [Erudus System](#) has been supplied by the manufacturers of the products and, whilst the owners of the Erudus System take steps to ensure the information is regularly updated, they give no warranty and no guarantee that the information is accurate. Product information and ingredients may change, please always read product labels carefully in addition to using the information provided by Erudus One.

We do not accept liability for any inaccuracies or incorrect information contained on this site. Please visit <http://www.erudus.com/terms-and-conditions> for full terms and conditions.

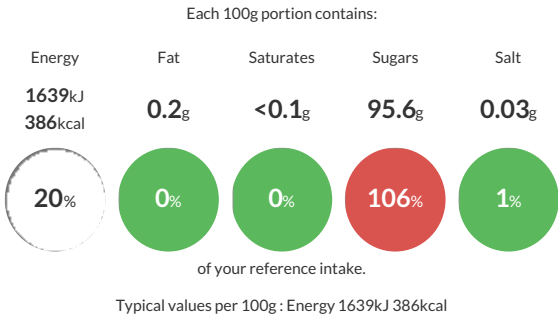
# Silver Spoon Dark Brown Soft (BB) 10x500g

Short Product Name:

Very moist crystalline product, manufactured from a blend of beet sugar, and glycerol which is added to improve flowability during packing. The product is free from particulates and visible extraneous material. The product stays soft under typical storage conditions. Conforms to all relevant statutory requirements (UK & EU Regulations).

Traded Unit GTIN: 05010067300888 Internal GTIN: 5010067300871 Supplier : The Silver Spoon Company Suppliers Product Code : 30088

## Reference Intake



## Nutritional Information

Typical Values	Per 100g
Energy	1639kJ 386kCal
Carbohydrates	95.6g
of which sugars	95.6g
Fat	0.2g
of which saturates	<0.1g
Fibre	0g
Protein	0.4g
Salt	0.03g

## Allergy Information

Key: Contains May Contain

  
Gluten < 20ppm

  
Does Not Contain Milk

  
Does Not Contain Eggs

  
Does Not Contain Peanuts

  
Does Not Contain Nuts

  
Does Not Contain Crustaceans

  
Does Not Contain Mustard

  
Does Not Contain Fish

  
Does Not Contain Lupin

  
Does Not Contain Sesame

  
Does Not Contain Celery

  
Does Not Contain Soya

  
Does Not Contain Molluscs

  
Does Not Contain Sulphur Dioxide

Gluten Claim  
Gluten content is less than 20ppm.

## Ingredients

Sugar, Cane molasses, Humectant: Glycerol.

## Dietary Information

Key: Suitable for

  
Suitable for Vegetarian

  
Suitable for Vegan

  
May not be suitable for Kosher

  
May not be suitable for Halal

  
Suitable for Coeliac