

The information on the [Erudus System](#) has been supplied by the manufacturers of the products and, whilst the owners of the Erudus System take steps to ensure the information is regularly updated, they give no warranty and no guarantee that the information is accurate. Product information and ingredients may change, please always read product labels carefully in addition to using the information provided by Erudus One.

We do not accept liability for any inaccuracies or incorrect information contained on this site. Please visit <http://www.erudus.com/terms-and-conditions> for full terms and conditions.

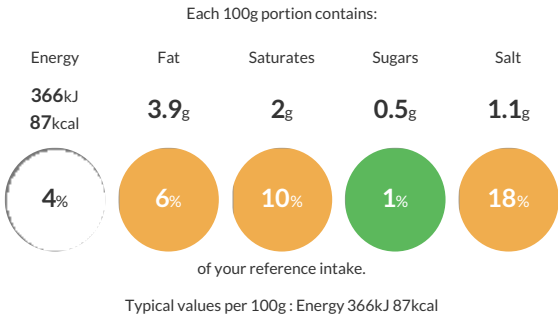
Portico Classic Cooked Scottish MSC Moules Marinières

Short Product Name:
Cooked Scottish MSC Moules Marinières

Shell on Mussels in a creamy white wine, onion & parsley sauce; 8 x 450g (70-100/kg)

Traded Unit GTIN: 5024333110170 Internal GTIN: Supplier : Sysco GB Limited Suppliers Product Code : 3130

Reference Intake




Nutritional Information


Typical Values	Per 100g
Energy	366kJ 87kCal
Carbohydrates	4.9g
of which sugars	0.5g
Fat	3.9g
of which saturates	2g
Fibre	0.5g
Protein	7.9g
Salt	1.1g

Allergy Information


Key: Contains May Contain



Does Not Contain Cereal/Gluten


Contains Milk


Does Not Contain Eggs


Does Not Contain Peanuts


Does Not Contain Nuts



Does Not Contain Crustaceans



Does Not Contain Mustard


Does Not Contain Fish


Does Not Contain Lupin


Does Not Contain Sesame


Does Not Contain Celery


Does Not Contain Soya


Contains Molluscs


Does Not Contain Sulphur Dioxide

Dietary Information

Key: Suitable for


May not be suitable for Vegetarian


May not be suitable for Vegan


May not be suitable for Kosher


May not be suitable for Halal


NO DATA for Coeliac

Ingredients

Mussels (80%) (MOLLUSCS), White Wine Sauce (20%)(Whipping Cream (MILK) (41%), White Wine (25%), Whole MILK, Water, Cornflour, Onion, Butter (MILK), Rapeseed Oil, Spirit Vinegar, Parsley).