

The information on the [Erudus System](#) has been supplied by the manufacturers of the products and, whilst the owners of the Erudus System take steps to ensure the information is regularly updated, they give no warranty and no guarantee that the information is accurate. Product information and ingredients may change, please always read product labels carefully in addition to using the information provided by Erudus One.

We do not accept liability for any inaccuracies or incorrect information contained on this site. Please visit <http://www.erudus.com/terms-and-conditions> for full terms and conditions.

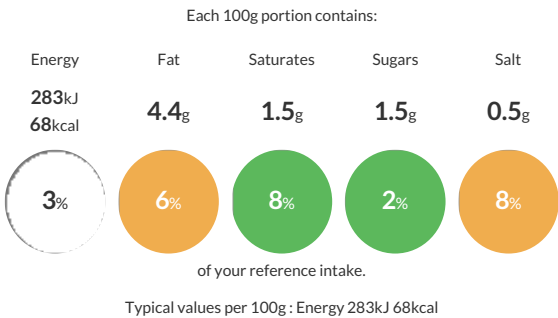
Beef Shin Ragu Sauce Frozen 4x1Kg (pot)

Short Product Name:
Beef Shin Ragu Sauce Frozen

Tomato sauce with Beef Shin

Traded Unit GTIN: 5055430414755 Internal GTIN: 5055430414755 Supplier : La Tua Pasta Suppliers Product Code : SC3881000X4F

Reference Intake



Nutritional Information

Typical Values	Per 100g
Energy	283kJ 68kCal
Carbohydrates	1.6g
of which sugars	1.5g
Fat	4.4g
of which saturates	1.5g
Fibre	-g
Protein	4g
Salt	0.5g

Allergy Information

Key: Contains May Contain


May Contain
Cereal/Gluten


May Contain
Milk


May Contain
Eggs


Does Not
Contain
Peanuts


May Contain
Nuts


May Contain
Crustaceans


May Contain
Mustard


May Contain
Fish


Does Not
Contain
Lupin


Does Not
Contain
Sesame


Contains
Celery


May Contain
Soya


Does Not
Contain
Molluscs


Does Not
Contain
Sulphur
Dioxide

Dietary Information

Key: Suitable for


May not be
suitable for
Vegetarian


May not be
suitable for
Vegan


May not be
suitable for
Kosher


May not be
suitable for
Halal


May not be
suitable for
Coeliac

Allergen Statement
Produced in a factory that handles Wheat, Egg, Milk, Nut, Mustard, Crustacean, Fish, Celery and Soy.

Ingredients

Tomato (22%), Beef Shin (18%), Water, Red wine, Onions, Carrots, **CELERY**, Olive Oil, Salt, Garlic, Citric Acid, Sage, Rosemary, Black Pepper, Bay Leaf.