

Supplier's Product Code :
 Product Added :
 Last Updated by Supplier :
 erudus id :

F02222
 27 April 2026
 27 April 2026
 f18059a05bc74ace8a791e411030197f



The information on the Erudus System has been supplied by the manufacturers of the products and, whilst the owners of the Erudus System take steps to ensure the information is regularly updated, they give no warranty and no guarantee that the information is accurate. Product information and ingredients may change, please always read product labels carefully in addition to using the information provided by Erudus One.

We do not accept liability for any inaccuracies or incorrect information contained on this site. Please visit <http://www.erudus.com/terms-and-conditions> for full terms and conditions.

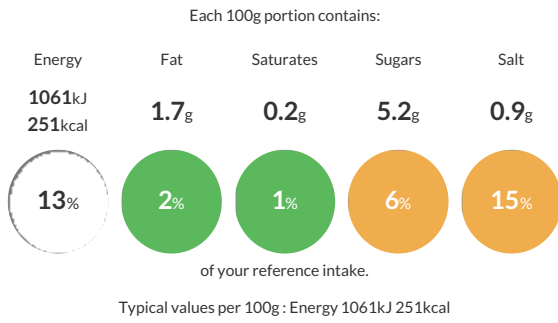
Kara MK4 Brioche Style Burger Bun

Short Product Name:
 MK4 Brioche Style Burger Bun

A soft sweet bun with a glazed golden top.

Traded Unit GTIN: 05051788122229 Internal GTIN: Supplier: Kara Foodservice (Fletchers) Suppliers Product Code: F02222

Reference Intake



Nutritional Information

Typical Values	Per 100g
Energy	1061kJ 251kCal
Carbohydrates	49.1g
of which sugars	5.2g
Fat	1.7g
of which saturates	0.2g
Fibre	3.4g
Protein	8g
Salt	0.9g

Allergy Information

Key: Contains May Contain

Contains Cereal/Gluten	Does Not Contain Milk	Does Not Contain Eggs	Does Not Contain Peanuts	Does Not Contain Nuts	Does Not Contain Crustaceans	Does Not Contain Mustard
Does Not Contain Fish	Does Not Contain Lupin	May Contain Sesame	Does Not Contain Celery	Does Not Contain Soya	Does Not Contain Molluscs	Does Not Contain Sulphur Dioxide

Dietary Information

Key: Suitable for

Suitable for Vegetarian	Suitable for Vegan	May not be suitable for Kosher	May not be suitable for Halal	NO DATA for Coeliac
-------------------------	--------------------	--------------------------------	-------------------------------	---------------------

Allergen Statement

For allergens, including cereals containing Gluten, see ingredients in **BOLD/CAPITALS**

MAY CONTAIN SESAME SEEDS

Ingredients

WHEAT Flour (WHEAT Flour, Calcium Carbonate, Niacin, Iron, Thiamin), Water, Sugar, Sourdough (Water, WHEAT Flour, RYE Flour, WHEATGERM Flour, Dextrose), Rapeseed Oil, Salt, Emulsifiers: E471, E472e, Yeast, Brandy Vinegar, Flavouring, Vegetable Protein, Wheat Starch, Colour: E160a (iv), Flour Treatment Agent: E300, Dextrose