

The information on the [Erudus System](#) has been supplied by the manufacturers of the products and, whilst the owners of the Erudus System take steps to ensure the information is regularly updated, they give no warranty and no guarantee that the information is accurate. Product information and ingredients may change, please always read product labels carefully in addition to using the information provided by Erudus One.

We do not accept liability for any inaccuracies or incorrect information contained on this site. Please visit <http://www.erudus.com/terms-and-conditions> for full terms and conditions.

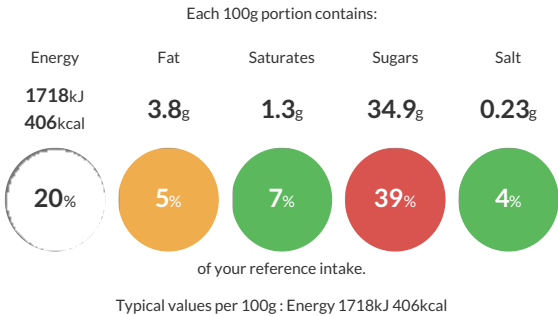
Sugar Cones Small x 210

Short Product Name:
Sugar Cones

Rolled Sugar Cones

Traded Unit GTIN: 05011229001179 Internal GTIN: Supplier: Nic Ice Ltd Suppliers Product Code: SP210

Reference Intake




Nutritional Information

Typical Values	Per 100g
Energy	1718kJ 406kCal
Carbohydrates	84.9g
of which sugars	34.9g
Fat	3.8g
of which saturates	1.3g
Fibre	2.9g
Protein	6.4g
Salt	0.23g


Allergy Information

Key: Contains May Contain


Contains
Cereal/Gluten


May Contain
Milk



Does Not
Contain
Eggs


Does Not
Contain
Peanuts


Does Not
Contain
Nuts



Does Not
Contain
Crustaceans



May Contain
Mustard



Does Not
Contain
Fish


Does Not
Contain
Lupin


Does Not
Contain
Sesame


Does Not
Contain
Celery


Contains
Soya


Does Not
Contain
Molluscs


Does Not
Contain
Sulphur
Dioxide

Dietary Information

Key: Suitable for


Suitable for
Vegetarian


May not be
suitable for
Vegan


May not be
suitable for
Kosher


May not be
suitable for
Halal


NO DATA for
Coeliac

Ingredients

WHEAT flour, Sugar, Palm oil, Emulsifier: SOYA Lecithin, Salt, Caramel.