

The information on the [Erudus System](#) has been supplied by the manufacturers of the products and, whilst the owners of the Erudus System take steps to ensure the information is regularly updated, they give no warranty and no guarantee that the information is accurate. Product information and ingredients may change, please always read product labels carefully in addition to using the information provided by Erudus One.

We do not accept liability for any inaccuracies or incorrect information contained on this site. Please visit <http://www.erudus.com/terms-and-conditions> for full terms and conditions.

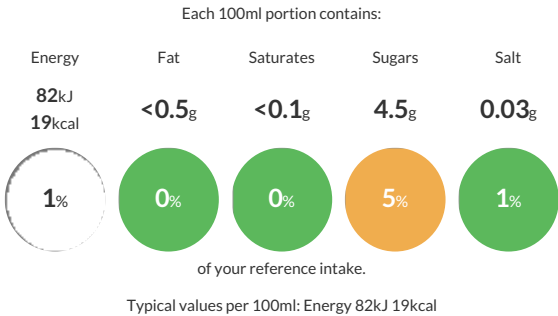
Lipton Ice Tea Raspberry PET 500ml x 12

Short Product Name:
Lipton Ice Tea Still Soft Drink with Tea Extract and Raspberry Juice with Sugar and Sweetener

Does Not Contain Preservatives Does Not Contain Colours Contains Naturally Sourced Sweetener(s) Contains Artificial Flavouring(s) Suitable for vegetarians and vegans

Traded Unit GTIN: 04060800171061 Internal GTIN: 4060800171047 Supplier : Britvic Soft Drinks Limited Suppliers Product Code : 209331

Reference Intake



Nutritional Information

Typical Values	Per 100ml
Energy	82kJ 19kCal
Carbohydrates	4.6g
of which sugars	4.5g
Fat	<0.5g
of which saturates	<0.1g
Fibre	-g
Protein	<0.5g
Salt	0.03g

Allergy Information

Key: Contains May Contain


Does Not Contain Cereal/Gluten


Does Not Contain Milk


Does Not Contain Eggs


Does Not Contain Peanuts


Does Not Contain Nuts


Does Not Contain Crustaceans


Does Not Contain Mustard


Does Not Contain Fish


Does Not Contain Lupin


Does Not Contain Sesame


Does Not Contain Celery


Does Not Contain Soya


Does Not Contain Molluscs


Does Not Contain Sulphur Dioxide

Dietary Information

Key: Suitable for


Suitable for Vegetarian


Suitable for Vegan


Suitable for Kosher


Suitable for Halal


NO DATA for Coeliac

Ingredients

Water, Sugar, Acid (Citric Acid), Tea Extract (0.12%), Raspberry Juice from Concentrate (0.1%), Flavouring, Acidity Regulator (Trisodium Citrate), Antioxidant (Ascorbic Acid), Sweetener (Steviol Glycosides)