

The information on the [Erudus System](#) has been supplied by the manufacturers of the products and, whilst the owners of the Erudus System take steps to ensure the information is regularly updated, they give no warranty and no guarantee that the information is accurate. Product information and ingredients may change, please always read product labels carefully in addition to using the information provided by Erudus One.

We do not accept liability for any inaccuracies or incorrect information contained on this site. Please visit <http://www.erudus.com/terms-and-conditions> for full terms and conditions.

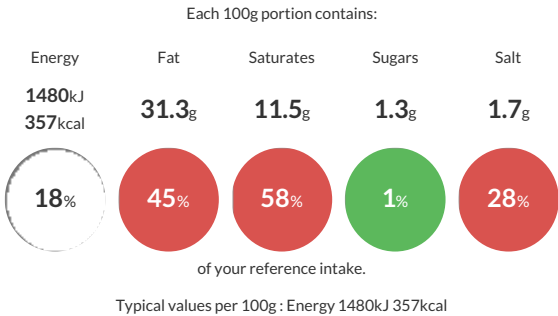
Speldhurst Cumberland Pork Sausage

Short Product Name:
Cumberland Pork Sausage

Cumberland Pork Sausage

Traded Unit GTIN:  Internal GTIN: Supplier :  Speldhurst Quality Foods Limited Suppliers Product Code :  502


Reference Intake




Nutritional Information

Typical Values	Per 100g
Energy	1480kJ 357kCal
Carbohydrates	7.2g
of which sugars	1.3g
Fat	31.3g
of which saturates	11.5g
Fibre	0.6g
Protein	11.8g
Salt	1.7g


Allergy Information

Key:  Contains  May Contain


Contains
Cereal/Gluten


Does Not
Contain
Milk



Does Not
Contain
Eggs



Does Not
Contain
Peanuts


Does Not
Contain
Nuts


Does Not
Contain
Crustaceans



Does Not
Contain
Mustard


Does Not
Contain
Fish


Does Not
Contain
Lupin


Does Not
Contain
Sesame


Does Not
Contain
Celery


Does Not
Contain
Soya


Does Not
Contain
Molluscs


Contains
Sulphur
Dioxide

Dietary Information

Key:  Suitable for


NO DATA for
Vegetarian


NO DATA for
Vegan


May not be
suitable for
Kosher


May not be
suitable for
Halal


NO DATA for
Coeliac

Ingredients

Ingredients
Pork Cuts (80% - Pork Shoulder 46.5%, Pork Belly 33.5%), water, rusk (**WHEAT** flour (**GLUTEN**), salt, raising agent E503), spices, herbs, sugar, emulsifier E450, citrus fibre, Preservative E223 (**SULPHITE**), anti-oxidant E301, Filled into a Natural casing.