

The information on the [Erudus System](#) has been supplied by the manufacturers of the products and, whilst the owners of the Erudus System take steps to ensure the information is regularly updated, they give no warranty and no guarantee that the information is accurate. Product information and ingredients may change, please always read product labels carefully in addition to using the information provided by Erudus One.

We do not accept liability for any inaccuracies or incorrect information contained on this site. Please visit <http://www.erudus.com/terms-and-conditions> for full terms and conditions.

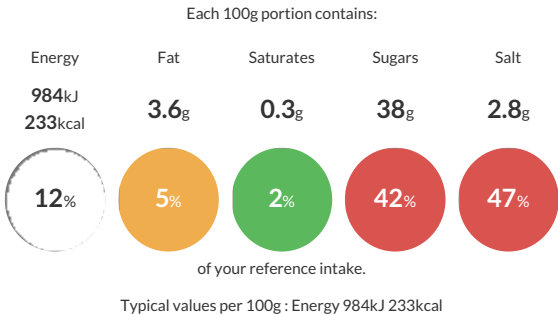
Knorr Professional Blue Dragon Hoi Sin Concentrated Sauce 1.1L

Short Product Name:
Hoi Sin Concentrated Sauce

A smooth concentrated hoi sin sauce combining soya bean paste and soy sauce with a Chinese Five Spice blend

Traded Unit GTIN: **8712566937707** Internal GTIN: **8712566361717** Supplier : **Unilever** Suppliers Product Code : **29377001**

Reference Intake



Nutritional Information

Typical Values	Per 100g
Energy	984kJ 233kCal
Carbohydrates	46g
of which sugars	38g
Fat	3.6g
of which saturates	0.3g
Fibre	0.7g
Protein	2.9g
Salt	2.8g

Allergy Information

Key: **Contains** **May Contain**


Contains Cereal/Gluten


Does Not Contain Milk


Does Not Contain Eggs


May Contain Peanuts


May Contain Nuts


Does Not Contain Crustaceans


May Contain Mustard


Does Not Contain Fish


Does Not Contain Lupin


Does Not Contain Sesame


Does Not Contain Celery


Contains Soya


Does Not Contain Molluscs


Does Not Contain Sulphur Dioxide

Dietary Information

Key: **Suitable for**


Suitable for Vegetarian


Suitable for Vegan


May not be suitable for Kosher


May not be suitable for Halal


May not be suitable for Coeliac

Allergen Statement
May contain mustard, nuts and peanuts.
NB: Lactose free claim has not been validated so claim can't be made

Ingredients

Water, glucose syrup, sugar, **SOYA** paste (10%) (water, **SOYABEAN**, rice, salt), light **SOY** sauce (10%) (water, salt, **SOYABEAN**, **WHEAT**, sugar), concentrated tomato puree (4%), modified starch, spirit vinegar, ginger puree (2.5%), garlic puree (2.5%), onion powder, rapeseed oil, chinese five spice (1%), colour (plain caramel).