

The information on the [Erudus System](#) has been supplied by the manufacturers of the products and, whilst the owners of the Erudus System take steps to ensure the information is regularly updated, they give no warranty and no guarantee that the information is accurate. Product information and ingredients may change, please always read product labels carefully in addition to using the information provided by Erudus One.

We do not accept liability for any inaccuracies or incorrect information contained on this site. Please visit <http://www.erudus.com/terms-and-conditions> for full terms and conditions.

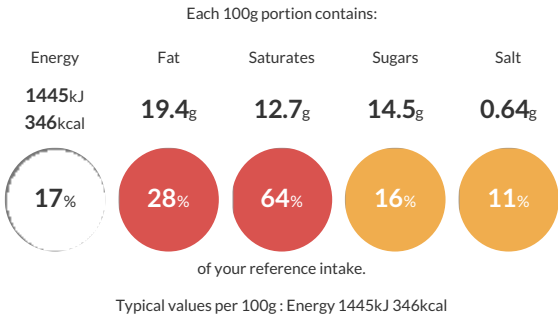
Butter Triple Pain au chocolat x 60

Short Product Name:
Butter Triple Pain au chocolat

Ready to bake, frozen Pain au chocolat

Traded Unit GTIN: **3291811157589** Internal GTIN: Supplier: **Delifrance (UK) Limited** Suppliers Product Code: **27245**

Reference Intake



Nutritional Information

| Typical Values | Per 100g |
|--------------------|-------------------|
| Energy | 1445kJ 346kCal |
| Carbohydrates | 35.8g |
| of which sugars | 14.5g |
| Fat | 19.4g |
| of which saturates | 12.7g |
| Fibre | 2.4g |
| Protein | 6.5g |
| Salt | 0.64g |

Allergy Information

Key: **Contains** **May Contain**


Contains Cereal/Gluten


Contains Milk


Contains Eggs


Does Not Contain Peanuts


May Contain Nuts


Does Not Contain Crustaceans


Does Not Contain Mustard


Does Not Contain Fish


Does Not Contain Lupin


Does Not Contain Sesame


Does Not Contain Celery


Contains Soya


Does Not Contain Molluscs


Does Not Contain Sulphur Dioxide

Dietary Information

Key: **Suitable for**


Suitable for Vegetarian


May not be suitable for Vegan


May not be suitable for Kosher


May not be suitable for Halal


NO DATA for Coeliac

Allergen Statement
The production site handles other sources of gluten on the production lines (Barley,Oat & Rye).
Precautionary allergen labelling is voluntary according to Food Law (Regulation (EC) No 1169/2011 (chapter V, point 3)). Our group position is not to declare "may contain other sources of gluten" on our labels as all products contain gluten from wheat in the raw material supplied as a minimum

Ingredients

Wheat flour, filling 17% (rehydrated whole milk, fresh whole milk, white chocolate 15% (sugar, cocoa butter, whole milk powder, skimmed milk powder, natural vanilla flavouring), sugar, modified starch, dairy cream (milk), thickener (E466), preservative (E202), salt, stabiliser (E401), natural vanilla extract, coloring ingredient (safflower extract)), water, butter 15,5% (milk), chocolate 6% (sugar, cocoa mass, cocoa butter, emulsifier (E322 (soya))), milk chocolate drops 4,5% (sugar, whole milk powder, cocoa butter, cocoa mass, emulsifier (E322 (soya))), natural vanilla flavouring), dark chocolate topping 2,5% (sugar, cocoa mass, cocoa butter, emulsifier (E322 (soya))), sugar, yeast, wheat gluten, eggs, salt, flour treatment agent (E300), enzyme.