

The information on the [Erudus System](#) has been supplied by the manufacturers of the products and, whilst the owners of the Erudus System take steps to ensure the information is regularly updated, they give no warranty and no guarantee that the information is accurate. Product information and ingredients may change, please always read product labels carefully in addition to using the information provided by Erudus One.

We do not accept liability for any inaccuracies or incorrect information contained on this site. Please visit <http://www.erudus.com/terms-and-conditions> for full terms and conditions.

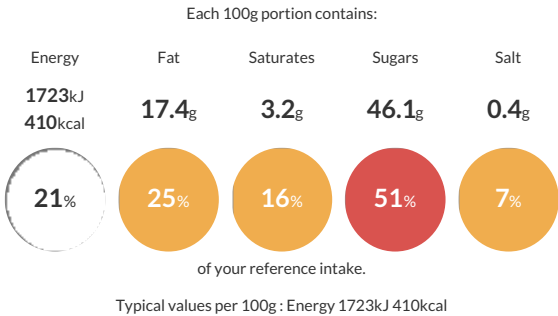
Victoria Sponge Sandwich (1x18 ptn)

Short Product Name:
Victoria Sponge Sandwich

A light sponge filled with icing and raspberry jam and sprinkled with sugar snow

Traded Unit GTIN: 5060044072116 Internal GTIN: Supplier: The Handmade Cake Co. Suppliers Product Code: F072116

Reference Intake



Nutritional Information

Typical Values	Per 100g
Energy	1723kJ 410kCal
Carbohydrates	59g
of which sugars	46.1g
Fat	17.4g
of which saturates	3.2g
Fibre	0.6g
Protein	3.5g
Salt	0.4g

Allergy Information

Key: Contains May Contain


Contains
Cereal/Gluten


Contains
Milk


Contains
Eggs


Does Not
Contain
Peanuts


May Contain
Nuts


Does Not
Contain
Crustaceans


Does Not
Contain
Mustard


Does Not
Contain
Fish


Does Not
Contain
Lupin


Does Not
Contain
Sesame


Does Not
Contain
Celery


Does Not
Contain
Soya


Does Not
Contain
Molluscs


Does Not
Contain
Sulphur
Dioxide

Dietary Information

Key: Suitable for


Suitable for
Vegetarian


May not be
suitable for
Vegan


May not be
suitable for
Kosher


May not be
suitable for
Halal


NO DATA for
Coeliac

Ingredients

Sugar, Raspberry Jam (16%) [Glucose-Fructose Syrup, Raspberry Puree, Sugar, Gelling Agent (Pectin), Acid (Citric Acid), Colour (Anthocyanins), Acidity Regulator (Sodium Citrates)], **WHEAT** Flour (with Calcium Carbonate, Niacin, Iron, Thiamin), Pasteurised Free Range **EGG**, Rapeseed Oil, Vegetable Margarine [Palm Oil, Rapeseed Oil, Water, Salt, Emulsifier (E471), Natural Flavouring], Water, Baking Powder [Raising Agents (E575, E500(ii), E336(i)), Maize Starch], Vanilla Flavouring (0.7%), Skimmed **MILK** Powder, Sugar Snow Dusting (0.4%) [Dextrose, Sugar, Cornflour, Palm Oil], Modified Maize Starch.