

Supplier's Product Code :  
 Product Added :  
 Last Updated by Supplier :  
 erudus id :

462930  
 02 June 2026  
 02 June 2026  
 f8b5d7831b2e4836b6a4e6f946e30cec



The information on the **Erudus System** has been supplied by the manufacturers of the products and, whilst the owners of the Erudus System take steps to ensure the information is regularly updated, they give no warranty and no guarantee that the information is accurate. Product information and ingredients may change, please always read product labels carefully in addition to using the information provided by Erudus One.

We do not accept liability for any inaccuracies or incorrect information contained on this site. Please visit <http://www.erudus.com/terms-and-conditions> for full terms and conditions.

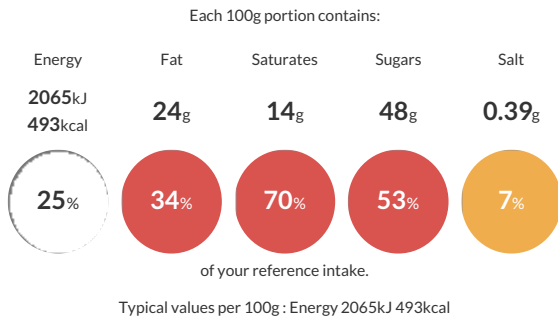
## TWIX 5x32x50g Std GB IE

Short Product Name:  
 Twix Chocolate Biscuit Twin Bar 50g

Confectionery Bar

Traded Unit GTIN: **05000159559676** Internal GTIN: **5900951313592** Supplier : **Mars** Suppliers Product Code : **462930**

### Reference Intake



### Nutritional Information

Typical Values	Per 100g
Energy	2065kJ 493kCal
Carbohydrates	65g
of which sugars	48g
Fat	24g
of which saturates	14g
Fibre	-g
Protein	4.6g
Salt	0.39g

### Allergy Information

Key: **Contains** **May Contain**

Contains Cereal/Gluten	Contains Milk	Does Not Contain Eggs	Does Not Contain Peanuts	May Contain Nuts	Does Not Contain Crustaceans	Does Not Contain Mustard
Does Not Contain Fish	Does Not Contain Lupin	Does Not Contain Sesame	Does Not Contain Celery	Contains Soya	Does Not Contain Molluscs	Does Not Contain Sulphur Dioxide

### Dietary Information

Key: **Suitable for**

Suitable for Vegetarian	NO DATA for Vegan	NO DATA for Kosher	NO DATA for Halal	NO DATA for Coeliac
-------------------------	-------------------	--------------------	-------------------	---------------------

### Ingredients

Sugar, Glucose Syrup, **WHEAT** Flour, Palm Fat, Skimmed **MILK** Powder, Cocoa Butter, Cocoa Mass, Whey Permeate (**MILK**), **MILK** Fat, Fat-Reduced Cocoa Powder, Salt, Emulsifier (**SOYA** Lecithin), Raising Agent (E500), Flavouring