

The information on the [Erudus System](#) has been supplied by the manufacturers of the products and, whilst the owners of the Erudus System take steps to ensure the information is regularly updated, they give no warranty and no guarantee that the information is accurate. Product information and ingredients may change, please always read product labels carefully in addition to using the information provided by Erudus One.

We do not accept liability for any inaccuracies or incorrect information contained on this site. Please visit <http://www.erudus.com/terms-and-conditions> for full terms and conditions.

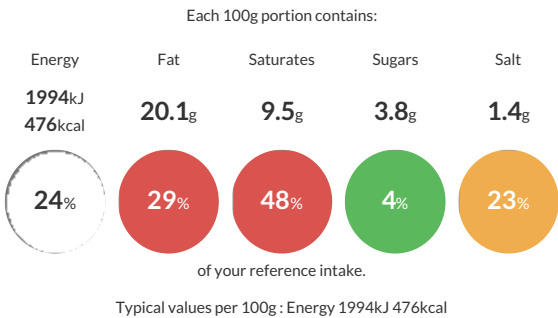
## Jacob's Biscuits for Cheese 6 x 800g

Short Product Name:  
Jacob's Biscuits for Cheese 800g

Biscuits for Cheese

Traded Unit GTIN: 5000168036410 Internal GTIN: 5000168036427 Supplier : Pladis (UK) Ltd Suppliers Product Code : 44180

### Reference Intake



### Nutritional Information

Typical Values	Per 100g
Energy	1994kJ 476kCal
Carbohydrates	62.6g
of which sugars	3.8g
Fat	20.1g
of which saturates	9.5g
Fibre	4.1g
Protein	9.1g
Salt	1.4g

### Allergy Information

Key: Contains May Contain

  
Contains  
Cereal/Gluten

  
Contains  
Milk

  
May Contain  
Eggs

  
Does Not  
Contain  
Peanuts

  
Does Not  
Contain  
Nuts

  
Does Not  
Contain  
Crustaceans

  
Does Not  
Contain  
Mustard

  
Does Not  
Contain  
Fish

  
Does Not  
Contain  
Lupin

  
May Contain  
Sesame

  
Does Not  
Contain  
Celery

  
May Contain  
Soya

  
Does Not  
Contain  
Molluscs

  
Does Not  
Contain  
Sulphur  
Dioxide

Allergen Statement  
Contains: Milk, Gluten (Wheat, Barley, Rye).  
May also contain Sesame Seeds, Egg, Soya.

### Ingredients

Flour (<b>Wheat</b> Flour, Calcium, Iron, Niacin, Thiamin), Palm Oil, Sugar, Glucose Syrup, <b>Wheat</b> Bran, Salt, <b>Wheat</b> Starch, Raising Agents (Ammonium Bicarbonate, Sodium Bicarbonate, Disodium Diphosphate), Dried Powdered Cheese (<b>Milk</b>), <b>Wheatgerm</b>, <b>Barley</b> and <b>Barley</b> Malt Extract, Vegetable Fibre (Inulin, Soluble Corn Fibre, Pea), <b>Barley</b> Flakes, Kibbled <b>Rye</b>, Kibbled <b>Wheat</b>, Dried Autolysed Yeast, Dried Whey (<b>Milk</b>), Black Pepper, <b>Wheat</b> Protein, Natural Flavouring [Dried Yeast Extract, Potassium Chloride, Dried Cheese (<b>Milk</b>), Maltodextrin, Natural Flavourings, Dried Whey (<b>Milk</b>), Vegetable Oils (Coconut, Rapeseed)], Yeast, Acid (Lactic Acid), Poppy Seeds, Natural Flavourings, Malted <b>Barley</b> Flour, Emulsifier (E472e).

### Dietary Information

Key: Suitable for

  
Suitable for  
Vegetarian

  
May not be  
suitable for  
Vegan

  
May not be  
suitable for  
Kosher

  
May not be  
suitable for  
Halal

  
NO DATA for  
Coeliac