

The information on the [Erudus System](#) has been supplied by the manufacturers of the products and, whilst the owners of the Erudus System take steps to ensure the information is regularly updated, they give no warranty and no guarantee that the information is accurate. Product information and ingredients may change, please always read product labels carefully in addition to using the information provided by Erudus One.

We do not accept liability for any inaccuracies or incorrect information contained on this site. Please visit <http://www.erudus.com/terms-and-conditions> for full terms and conditions.

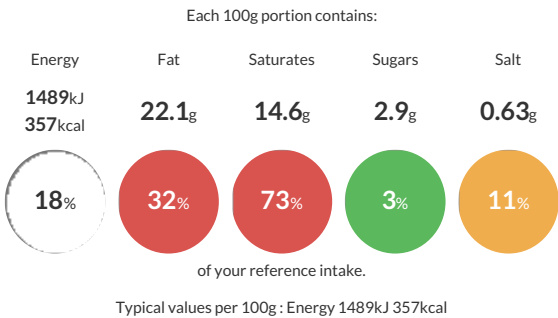
Cheese Twist x51

Short Product Name:  
Cheese Twist

Frozen, Ready to bake, pre egg glazed Cheddar Cheese Twist

Traded Unit GTIN: 3291811158234 Internal GTIN: Supplier: Delifrance (UK) Limited Suppliers Product Code: 27334

Reference Intake



Nutritional Information

Typical Values	Per 100g
Energy	1489kJ 357kCal
Carbohydrates	28.2g
of which sugars	2.9g
Fat	22.1g
of which saturates	14.6g
Fibre	1.7g
Protein	10.5g
Salt	0.63g

Allergy Information

Key: Contains May Contain

  
Contains Cereal/Gluten

  
Contains Milk

  
Contains Eggs

  
Does Not Contain Peanuts

  
May Contain Nuts

  
Does Not Contain Crustaceans

  
Does Not Contain Mustard

  
Does Not Contain Fish

  
Does Not Contain Lupin

  
Does Not Contain Sesame

  
Does Not Contain Celery

  
May Contain Soya

  
Does Not Contain Molluscs

  
Does Not Contain Sulphur Dioxide

Dietary Information

Key: Suitable for

  
Suitable for Vegetarian

  
May not be suitable for Vegan

  
May not be suitable for Kosher

  
May not be suitable for Halal

  
NO DATA for Coeliac

Ingredients

Water, <b>wheat </b>flour, butter (<b>milk</b>) (17%), grated cheddar cheese (14.4)% (whole <b>milk</b>, salt, lactic starters, coagulant, colour E160b(iii)), sugar, <b>wheat</b> <b>gluten</b>, yeast, modified starch, powdered dairy cream (<b>milk</b>), <b>eggs</b>, whey powder (<b>milk</b>), salt, lactose (<b>milk</b>), starch, thickener (E401), skimmed <b>milk </b>powder, <b>milk </b>proteins, black pepper, stabiliser (E450, E516), flour treatment agent (E300), enzyme.