

The information on the [Erudus System](#) has been supplied by the manufacturers of the products and, whilst the owners of the Erudus System take steps to ensure the information is regularly updated, they give no warranty and no guarantee that the information is accurate. Product information and ingredients may change, please always read product labels carefully in addition to using the information provided by Erudus One.

We do not accept liability for any inaccuracies or incorrect information contained on this site. Please visit <http://www.erudus.com/terms-and-conditions> for full terms and conditions.

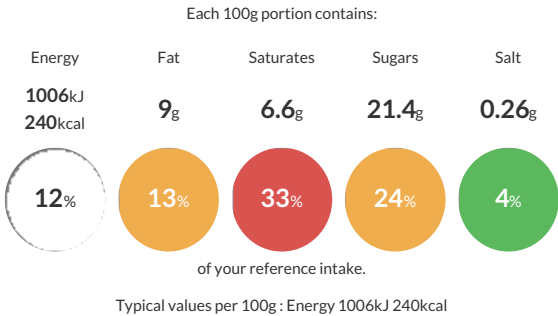
Clotted Cream & Strawberry Jam Gelato 4.5L

Short Product Name:
Clotted Cream & Strawberry Jam Gelato

Clotted cream gelato rippled with strawberry jam.

Traded Unit GTIN: 15060540310245 Internal GTIN: Supplier: Hackney Gelato Suppliers Product Code: HGCCS451

Reference Intake



Nutritional Information

Typical Values	Per 100g
Energy	1006kJ 240kCal
Carbohydrates	35.1g
of which sugars	21.4g
Fat	9g
of which saturates	6.6g
Fibre	-g
Protein	2.9g
Salt	0.26g

Allergy Information

Key: Contains May Contain


Does Not Contain Cereal/Gluten


Contains Milk


May Contain Eggs


May Contain Peanuts


May Contain Nuts


Does Not Contain Crustaceans


Does Not Contain Mustard


Does Not Contain Fish


Does Not Contain Lupin


May Contain Sesame


Does Not Contain Celery


May Contain Soya


Does Not Contain Molluscs


May Contain Sulphur Dioxide

Dietary Information

Key: Suitable for


Suitable for Vegetarian


NO DATA for Vegan


May not be suitable for Kosher


May not be suitable for Halal


NO DATA for Coeliac

Allergen Statement
Made in a kitchen that also handles EGG, SOYA, NUTS, PEANUTS, SUPHITES and SESAME.

Ingredients

Fresh MILK, strawberry jam 10% (glucose syrup, strawberry puree, water, sugar, starch, natural colours: fruit and vegetable concentrate, thickener: pectin, acidity regulator: citric acid, natural flavouring), clotted cream 9% (MILK), sugar, dextrose, fresh double cream (MILK), maltodextrin, skimmed MILK powder, stabilisers (locust bean gum, guar gum, carrageenan), emulsifier (mono and diglycerides of fatty acids), sea salt.