

Supplier's Product Code :
 Product Added :
 Last Updated by Supplier :
 erudus id :

P-RF3SPCH/24
 04 March 2026
 04 March 2026
 fab07c0b2b174faca6e29b48fa4bfdc0



The information on the **Erudus System** has been supplied by the manufacturers of the products and, whilst the owners of the Erudus System take steps to ensure the information is regularly updated, they give no warranty and no guarantee that the information is accurate. Product information and ingredients may change, please always read product labels carefully in addition to using the information provided by Erudus One.

We do not accept liability for any inaccuracies or incorrect information contained on this site. Please visit <http://www.erudus.com/terms-and-conditions> for full terms and conditions.

Radnor Fizz Sour Cherry 45% 24x330ml

Short Product Name:

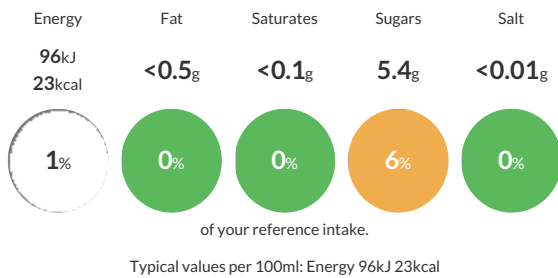
Sour cherry flavoured sparkling apple juice blend drink with fruit juices from concentrate with sweetener

Radnor Fizz Sour Cherry combines our sparkling spring water with real fruit juice. The Radnor Fizz range is one of the UK's Leading School Compliant drinks brands and sold in schools nationwide. Our Radnor Fizz bottles are 100% recyclable and made from 30% recycled plastic. Help us give your bottles another life by recycling. Here at Radnor Hills, we are on a mission to keep children hydrated whilst also looking after the future of their planet. We are a zero to landfill site, our bottles are made up of 30% recycled plastic and are 100% recyclable. Part of our pledge to protect what's important, after all it's in our nature.

Traded Unit GTIN: **05026109007028** Internal GTIN: **5026109007011** Supplier: **Radnor Hills Mineral Water Company Ltd** Suppliers Product Code : **P-RF3SPCH/24**

Reference Intake

Each 100ml portion contains:

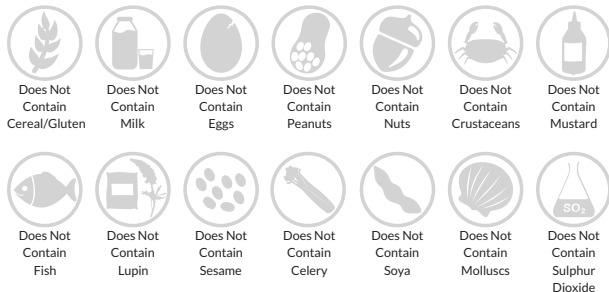


Nutritional Information

Typical Values	Per 100ml
Energy	96kJ 23kCal
Carbohydrates	5.4g
of which sugars	5.4g
Fat	<0.5g
of which saturates	<0.1g
Fibre	-g
Protein	<0.5g
Salt	<0.01g

Allergy Information

Key: **Contains** **May Contain**



Dietary Information

Key: **Suitable for**



Ingredients

Carbonated spring water, Fruit juices from concentrate 45%: apple 37%, lemon 5%, white grape 3%. Preservatives: potassium sorbate, dimethyl dicarbonate. Flavourings, Sweet potato and safflower extracts, Sweetener: sucralose.