

The information on the [Erudus System](#) has been supplied by the manufacturers of the products and, whilst the owners of the Erudus System take steps to ensure the information is regularly updated, they give no warranty and no guarantee that the information is accurate. Product information and ingredients may change, please always read product labels carefully in addition to using the information provided by Erudus One.

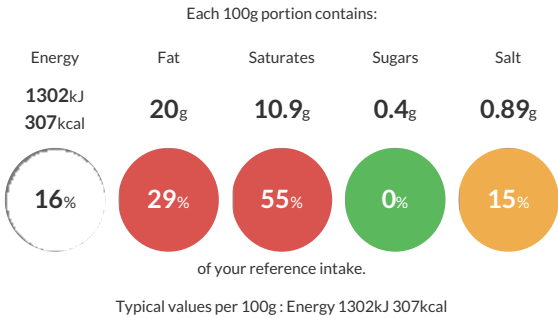
We do not accept liability for any inaccuracies or incorrect information contained on this site. Please visit <http://www.erudus.com/terms-and-conditions> for full terms and conditions.

PEPPERED STEAK SLICE (30 X 183g)

A puff pastry slice filled with steak in a peppery sauce with an egg glaze.

Traded Unit GTIN: - Internal GTIN: Supplier : **David Wood Baking (Medway)** Suppliers Product Code: **SL1000**

Reference Intake



Nutritional Information

| Typical Values | Per 100g |
|--------------------|-------------------|
| Energy | 1302kJ 307kCal |
| Carbohydrates | 22.7g |
| of which sugars | 0.4g |
| Fat | 20g |
| of which saturates | 10.9g |
| Fibre | 1.1g |
| Protein | 9.8g |
| Salt | 0.89g |

Allergy Information

Key: **Contains** **May Contain**

Dietary Information

Key: **Suitable for**

Allergen Statement
For allergens including cereals contain gluten see ingredients in **BOLD and CAPITAL LETTERS**

May contain traces of Soya

Ingredients

Water, Wheat flour (**WHEAT** Flour, Calcium Carbonate, Iron, Niacin, Thiamin), Margarine (Palm Oil, Water, Salt, Emulsifier: mono and Di- Glycerides of Fatty Acid (E471)). Beef (17.8%), Modified Waxy Maize Starch, Onion, Fat Powder (Palm Oil, Glucose Syrup, **MILK** Protein, Free Flowing Agent: silicon dioxide (E551)). Beef Stock (Water, Beef Stock, Yeast Extract, Salt, Lemon Juice Concentrate, Beef Fat), Tomato Puree, Wholegrain **MUSTARD**, Salt, Black Pepper (0.3%), Whole **EGG**, Garlic Puree, **EGG** Yolk, **BARLEY** Malt Extract

Each baked slice contains 19.7% Beef