

The information on the [Erudus System](#) has been supplied by the manufacturers of the products and, whilst the owners of the Erudus System take steps to ensure the information is regularly updated, they give no warranty and no guarantee that the information is accurate. Product information and ingredients may change, please always read product labels carefully in addition to using the information provided by Erudus One.

We do not accept liability for any inaccuracies or incorrect information contained on this site. Please visit <http://www.erudus.com/terms-and-conditions> for full terms and conditions.

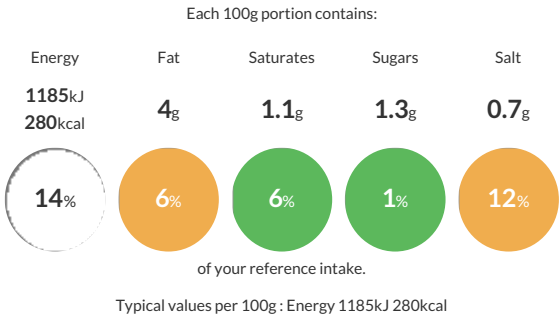
Tonnarelli Egg / Frozen 3Kg

Short Product Name:
Tonnarelli Egg

Egg Pasta

Traded Unit GTIN: Internal GTIN: Supplier: La Tua Pasta Suppliers Product Code: TN013000F

Reference Intake



Nutritional Information

Typical Values	Per 100g
Energy	1185kJ 280kCal
Carbohydrates	47.7g
of which sugars	1.3g
Fat	4g
of which saturates	1.1g
Fibre	-g
Protein	12.6g
Salt	0.7g

Allergy Information

Key: Contains May Contain


Contains
Cereal/Gluten


May Contain
Milk


Contains
Eggs


Does Not
Contain
Peanuts


May Contain
Nuts


May Contain
Crustaceans


May Contain
Mustard


May Contain
Fish


Does Not
Contain
Lupin


Does Not
Contain
Sesame


May Contain
Celery


May Contain
Soya


Does Not
Contain
Molluscs


Does Not
Contain
Sulphur
Dioxide

Dietary Information

Key: Suitable for


Suitable for
Vegetarian


May not be
suitable for
Vegan


NO DATA for
Kosher


NO DATA for
Halal


NO DATA for
Coeliac

Ingredients

Flour 00 (WHEAT, Calcium, Iron, Niacin, Thiamine), Pasteurised EGG (30%), Durum WHEAT Flour, Salt. Dusted with rice flour.