

Supplier's Product Code :
Product Added :
Last Updated by Supplier :
erudus id :

70-30-38-E4-U71.
27 February 2025
27 February 2025
fd3a1f342bf340a1936787c1ab6b7174



The information on the **Erudus System** has been supplied by the manufacturers of the products and, whilst the owners of the Erudus System take steps to ensure the information is regularly updated, they give no warranty and no guarantee that the information is accurate. Product information and ingredients may change, please always read product labels carefully in addition to using the information provided by Erudus One.

We do not accept liability for any inaccuracies or incorrect information contained on this site. Please visit <http://www.erudus.com/terms-and-conditions> for full terms and conditions.

DARK COUVERTURE CHOCOLATE 8 x 2.5kg

Short Product Name:

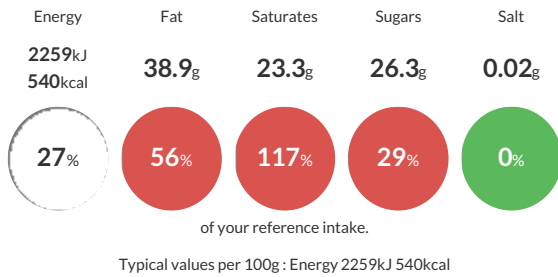
DARK COUVERTURE CHOCOLATE

FINEST BELGIAN 70% DARK COUVERTURE CHOCOLATE

Traded Unit GTIN: **5410522512847** Internal GTIN: **5410522512854** Supplier: **Barry Callebaut Belgium NV & IBC Belgium** Suppliers Product Code: **70-30-38-E4-U71.**

Reference Intake

Each 100g portion contains:



Nutritional Information

Typical Values	Per 100g
Energy	2259kJ 540kCal
Carbohydrates	30.8g
of which sugars	26.3g
Fat	38.9g
of which saturates	23.3g
Fibre	14g
Protein	8.8g
Salt	0.02g

Allergy Information

Key: **Contains** **May Contain**



Allergen Statement

May contain Milk

This product is made on shared lines that process products containing allergen ingredients and therefore may contain these allergens. The levels of cross contact allergens can vary. We strongly recommend our customers pass this allergen information forward and include it on their own product labels, particularly products sold to consumers. We also advise our customers to take into account any local allergen content and labeling standards. For more information please contact your BC representative.

Ingredients

Cocoa Mass 71.0%; Sugar 26.0%; Fat-reduced cocoa powder 2.0%; emulsifier **SOYA** lecithin <1%; Natural vanilla flavouring <1%;

Dietary Information

Key: **Suitable for**

