

Supplier's Product Code :
 Product Added :
 Last Updated by Supplier :
 erudus id :

MSAL100
 30 June 2026
 30 June 2026
 fdb8c78a4aea424ebf72f0c09e93b4ab



The information on the Erudus System has been supplied by the manufacturers of the products and, whilst the owners of the Erudus System take steps to ensure the information is regularly updated, they give no warranty and no guarantee that the information is accurate. Product information and ingredients may change, please always read product labels carefully in addition to using the information provided by Erudus One.

We do not accept liability for any inaccuracies or incorrect information contained on this site. Please visit <http://www.erudus.com/terms-and-conditions> for full terms and conditions.

Marshfield Farm Salted Caramel Ice Cream 12 x 125ml

Short Product Name:

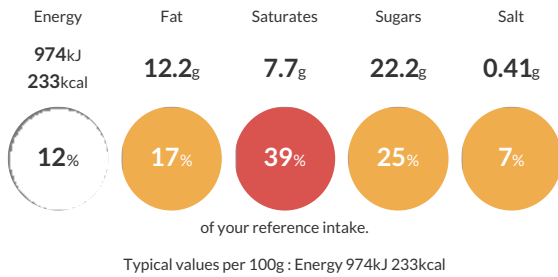
Marshfield Farm Salted Caramel Ice Cream

Salted caramel flavour dairy ice cream with a caramel ripple and butterscotch pieces

Traded Unit GTIN: 5060012792633 Internal GTIN: 5060012792657 Supplier: Marshfield Farm Ice Cream Limited Suppliers Product Code: MSAL100

Reference Intake

Each 100g portion contains:



Nutritional Information

Typical Values	Per 100g
Energy	974kJ 233kCal
Carbohydrates	27.8g
of which sugars	22.2g
Fat	12.2g
of which saturates	7.7g
Fibre	0.1g
Protein	3.2g
Salt	0.41g

Allergy Information

Key: Contains May Contain

Does Not Contain Cereal/Gluten	Contains Milk	Does Not Contain Eggs	Does Not Contain Peanuts	Does Not Contain Nuts	Does Not Contain Crustaceans	Does Not Contain Mustard
Does Not Contain Fish	Does Not Contain Lupin	Does Not Contain Sesame	Does Not Contain Celery	Contains Soya	Does Not Contain Molluscs	Does Not Contain Sulphur Dioxide

Dietary Information

Key: Suitable for

Suitable for Vegetarian	NO DATA for Vegan	NO DATA for Kosher	Suitable for Halal	NO DATA for Coeliac
-------------------------	-------------------	--------------------	--------------------	---------------------

Ingredients

Fresh Whole Milk, Double Cream (Milk) (17%), Sugar, Butterscotch pieces (8%) (Sugar, Glucose Syrup, Vegetable Fats and oils (Shea oil, Sustainable Palm oil and Palm stearin, Emulsifier: Sunflower Lecithin), Butter (Milk), Water, Sweetened Condensed Milk, Salt, Emulsifier: Soya lecithin, Natural Flavouring, Colour: Plain caramel), Caramel Ripple (6%) (Water, Sugar, Glucose Syrup, Double Cream (Milk), Sweetened Condensed Skimmed Milk, Stabiliser: Waxy Maize Starch, Butter (Milk), Burnt Sugar Syrup, Salt), Buttermilk powder, Glucose, Dextrose, Emulsifier: Mono- and Diglycerides of Fatty Acids, Stabilisers: Locust bean gum, Guar Gum, Carrageenan, Colour: Caramelised sugar syrup, Natural flavouring, Salt (<1%)