

The information on the [Erudus System](#) has been supplied by the manufacturers of the products and, whilst the owners of the Erudus System take steps to ensure the information is regularly updated, they give no warranty and no guarantee that the information is accurate. Product information and ingredients may change, please always read product labels carefully in addition to using the information provided by Erudus One.

We do not accept liability for any inaccuracies or incorrect information contained on this site. Please visit <http://www.erudus.com/terms-and-conditions> for full terms and conditions.

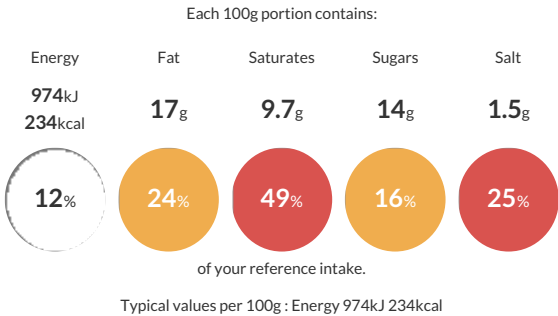
Knorr Professional Patak's Korma Concentrated Sauce 1.1L

Short Product Name:
Korma Concentrated Sauce

A concentrated korma sauce combining cream and coconut with a blend of spices.

Traded Unit GTIN: **8712566937790** Internal GTIN: **8712566361816** Supplier : **Unilever** Suppliers Product Code : **67884937**

Reference Intake



Nutritional Information

Typical Values	Per 100g
Energy	974kJ 234kCal
Carbohydrates	18g
of which sugars	14g
Fat	17g
of which saturates	9.7g
Fibre	1.8g
Protein	2g
Salt	1.5g

Allergy Information

Key: **Contains** **May Contain**


Does Not Contain Cereal/Gluten


Contains Milk


Does Not Contain Eggs


May Contain Peanuts


May Contain Nuts


Does Not Contain Crustaceans


May Contain Mustard


Does Not Contain Fish


Does Not Contain Lupin


Does Not Contain Sesame


Does Not Contain Celery


Does Not Contain Soya


Does Not Contain Molluscs


Does Not Contain Sulphur Dioxide

Gluten Claim
Gluten content is less than 20ppm.

Allergen Statement
May contain mustard, nuts and peanuts
Gluten Free

Ingredients

Water, sugar, single cream (**MILK**) (8%), creamed coconut (8%), double cream (**MILK**) (5%), rapeseed oil, modified starch, desiccated coconut (2.5%), concentrated tomato puree, spices, ginger puree (1.5%), garlic puree, salt, dried onions, cumin powder, acid (lactic acid), lemon juice concentrate, dried coriander leaf.

Dietary Information

Key: **Suitable for**


Suitable for Vegetarian


May not be suitable for Vegan


May not be suitable for Kosher


May not be suitable for Halal


Suitable for Coeliac