

The information on the [Erudus System](#) has been supplied by the manufacturers of the products and, whilst the owners of the Erudus System take steps to ensure the information is regularly updated, they give no warranty and no guarantee that the information is accurate. Product information and ingredients may change, please always read product labels carefully in addition to using the information provided by Erudus One.

We do not accept liability for any inaccuracies or incorrect information contained on this site. Please visit <http://www.erudus.com/terms-and-conditions> for full terms and conditions.

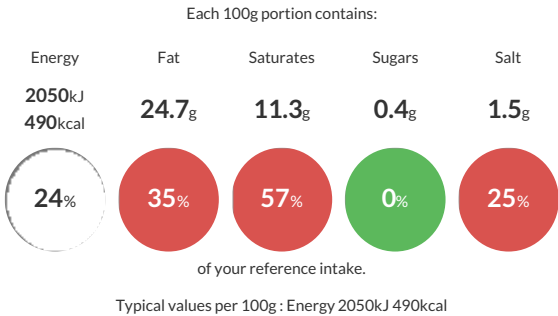
Veg Suet Pastry Mix 4 x 3.5kg

Short Product Name:
Veg Suet Pastry Mix

A dry pre-mix suitable for use as a baked or steamed Suet Pastry.

Traded Unit GTIN: 5028081002725 Internal GTIN: 5028081002626 Supplier : Middleton Foods Suppliers Product Code : CM0029

Reference Intake



Nutritional Information

Typical Values	Per 100g
Energy	2050kJ 490kCal
Carbohydrates	60g
of which sugars	0.4g
Fat	24.7g
of which saturates	11.3g
Fibre	2.9g
Protein	6.8g
Salt	1.5g

Allergy Information

Key: Contains May Contain


Contains
Cereal/Gluten


May Contain
Milk


May Contain
Eggs


Does Not
Contain
Peanuts


Does Not
Contain
Nuts


Does Not
Contain
Crustaceans


Does Not
Contain
Mustard


Does Not
Contain
Fish


Does Not
Contain
Lupin


Does Not
Contain
Sesame


Does Not
Contain
Celery


May Contain
Soya


Does Not
Contain
Molluscs


Does Not
Contain
Sulphur
Dioxide

Dietary Information

Key: Suitable for


Suitable for
Vegetarian


Suitable for
Vegan


May not be
suitable for
Kosher


May not be
suitable for
Halal


NO DATA for
Coeliac

Ingredients

WHEAT Flour (WHEAT, Calcium, Iron, Niacin, Thiamin), Vegetable Oil Blend (Palm & Rapeseed Oil), Vegetable Suet (Palm & Sunflower Oil, WHEAT Flour (WHEAT, Calcium, Iron, Niacin, Thiamin)), Raising Agent: (E450(i), E500(ii), E341(i)), Salt.