

The information on the [Erudus System](#) has been supplied by the manufacturers of the products and, whilst the owners of the Erudus System take steps to ensure the information is regularly updated, they give no warranty and no guarantee that the information is accurate. Product information and ingredients may change, please always read product labels carefully in addition to using the information provided by Erudus One.

We do not accept liability for any inaccuracies or incorrect information contained on this site. Please visit <http://www.erudus.com/terms-and-conditions> for full terms and conditions.

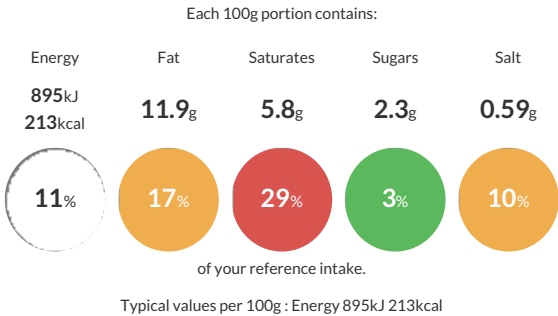
## Ch & Onion Quiche 11" (1 x 1)

**Short Product Name:**

11" diameter, whole quiche made with egg, onion, spring onion and mature Cheddar cheese encased in shortcrust pastry. Approx. 12 ptns per quiche/100g per ptn. Serve hot or thaw and serve cold. Made with British Lion free-range eggs. Suitable for vegetarians. (1 x 1)

**Traded Unit GTIN:** 05060062473773 **Internal GTIN:** Supplier : Central Foods Group Limited **Suppliers Product Code :** MSQW021

### Reference Intake



### Nutritional Information

Typical Values	Per 100g
Energy	895kJ 213kCal
Carbohydrates	21.6g
of which sugars	2.3g
Fat	11.9g
of which saturates	5.8g
Fibre	0.9g
Protein	5.8g
Salt	0.59g


### Allergy Information

Key: Contains May Contain

  
Contains Cereal/Gluten

  
Contains Milk

  
Contains Eggs

  
Does Not Contain Peanuts

  
Does Not Contain Nuts


  
Does Not Contain Crustaceans

  
Contains Mustard

  
Does Not Contain Fish

  
Does Not Contain Lupin

  
Does Not Contain Sesame

  
Does Not Contain Celery

  
Does Not Contain Soya

  
Does Not Contain Molluscs

  
Does Not Contain Sulphur Dioxide

### Dietary Information

Key: Suitable for

  
Suitable for Vegetarian

  
May not be suitable for Vegan

  
May not be suitable for Kosher

  
May not be suitable for Halal

  
May not be suitable for Coeliac

**Allergen Statement**  
For allergens, including cereals containing gluten, see ingredients in **CAPITALS**.

### Ingredients

Pastry Case: Fortified **WHEAT** Flour (**WHEAT** Flour, Calcium Carbonate, Iron, Niacin, Folic Acid, Thiamin), Margarine (Palm Oil, Coconut Oil, Rapeseed Oil, Water, Salt, Emulsifier (Mono- and Diglycerides of Fatty Acids), Acidity Regulators (Citric Acid, Disodium Citrate), Natural Flavouring, Colour (Natural Carotenoids)), Shortening (Palm Oil, Rapeseed Oil), Maize Flour, Water, Tomato Puree, Sea Salt. Filling: Water, Whole Liquid **EGG** (12%), Onion (7%), Mature Cheddar Cheese (6%) (**MILK**, Salt, Starter, Rennet, Colour (Annatto Bixin, Norbixin), Potato Starch), Spring Onion (5%), Whole **MILK** Powder, Cornflour, Modified Maize Starch, Chives, Sea Salt, **MUSTARD** Powder, Ground White Pepper.